

KAHO‘OLAWE

KO HEMA LAMALAMA | Newsletter of the Kaho‘olawe Island Reserve Commission | Fall 2019



In This Issue:

Director’s Message	1
New Leadership	2
Access Action: Mauka to Makai	3-4
Program Updates	5-6
Pīlina ‘Āina	7-8
Aloha Kaho‘olawe	9-10



Welcome to *Ko Hema Lamalama*, the newsletter of the Kaho‘olawe Island Reserve. Uncle Harry Mitchell interpreted this name as **the southern beacon**, which served as a source of light to weary travelers voyaging beyond the pillars of Kahiki. Let *Ko Hema Lamalama* aid us in sharing a source of light from Kaho‘olawe and the restoration of Hawaiian culture across Hawai‘i nei. Photo credit: Dean Tokishi. *This publication is made possible by supporters like you. Mahalo for helping us share Kaho‘olawe.*

DIRECTOR'S MESSAGE



Executive Director
Michael K. Nāho'opi'i

It is with great enthusiasm that I announce the appointment and swearing in of our two newest Kaho'olawe Island Reserve Commissioners. The Honorable David Ige, Governor of Hawaii appointed Saumalu Mataafa and Michele Miki'ala Pescaia to replace Commissioners Michele McLean and C. Kaliko Baker who both completed their term limit on the KIRC this year.

Saumalu was nominated by the Maui County Mayor, the Honorable Michael Victorino as the County's representative on the KIRC and works in the Department of Management, Before joining the KIRC, Saumalu was an analyst for the Maui County Council, specializing in housing-related topics. He also worked with the State Legislature where he helped draft policies to increase food sustainability, implement high-technology strategies, and manage infrastructure systems.

Miki'ala was nominated by the Protect Kaho'olawe 'Ohana as a PKO representative on the KIRC and is a National Park Service's Interpretive Park Ranger at Kalaupapa National Historic Park. Mikiala has served on the Moloka'i Planning Commission, with one year as chair as well as several terms on the Moloka'i Island Burial Council. Her deep, personal connection with Kaho'olawe began twenty-three years ago with her first huaka'i (access) and participant in our annual Makahiki ceremonies. Since then she has returned many times as a restoration volunteer and to participate in cultural and religious ceremony. She has brought her family, students and fellow community members to Kaho'olawe to join-in the history and the generational work needed to restore this most sacred island.

The KIRC Team

7 Commissioners

Appointed by the Governor

1 Executive Director

Hired by the Commission

14 Staff

Hired by the Executive Director

In 1994, the Hawai'i State Legislature created the Kaho'olawe Island Reserve Commission (KIRC) to manage the Kaho'olawe Island Reserve while it is held in trust for a future Native Hawaiian sovereign entity. The KIRC is an administrative branch of the Department of Land and Natural Resources (DLNR), and its roles and responsibilities are outline in the Hawai'i Revised Statutes.

By statute, the Commission consists of 7 members appointed by the Governor provided that 1 is a member of the Protect Kaho'olawe 'Ohana (PKO); 2 are appointed from a list provided by the PKO; 1 is a trustee or representative of the Office of Hawaiian Affairs (OHA); 1 is a county official appointed from a list provided by the Mayor of the County of Maui; 1 is the Chairperson of the Board of Land and Natural Resources (DLNR); and 1 is appointed from a list provided by Native Hawaiian Organizations (NHO).

Sunset in Honokanai'a.



**Commissioner
Mikiala Pescaia**

PKO Representative

Ms. Pescaia was raised on Molokai and graduated from Kamehameha Schools Kāpalama. She later graduated from the University of Hawai'i at Mānoa with a bachelor's degree in Hawaiian Language.

Prior to her current position as Interpretive Park Ranger at the Kalaupapa National Historic Park, Miki'ala was a director for a Moloka'i summer school program and Moloka'i site coordinator for Nā Pua Noeau, University of Hawai'i Hilo. She has also served as a cultural education specialist at the Bishop Museum, an instructor at the Moloka'i extension of UH Maui College, and taught in the Punana Leo o Moloka'i Hawaiian Immersion Preschool.



**Commissioner
Saumalu Mataafa**

Maui County Representative

Mr. Mataafa was born in Honolulu and raised in Lahaina.

After graduating from Lahainaluna High School he went on to Embry-Riddle Aeronautical University in Daytona Beach, Florida, where he received his Bachelor's degree in Aeronautics and his Master's degree in Human Factors and Systems. Prior to moving back to Hawaii, he worked on systems with the Federal Aviation Administration and completed space bioscience projects at NASA, in Moffett Field, California.

Saumalu is also an alumni of the McNair Fellowship Program and the Ka Ipu Kukui Fellowship Program.



Kūkulu Ke Ea A Kanaloa

The life & spirit of Kanaloa builds and takes form

The mission of the Kaho'olawe Island Reserve Commission is to implement the vision for Kaho'olawe.

The KIRC Vision:

The kino of Kanaloa is restored. Forests and shrublands of native plants and other biota clothe its slopes and valleys. Pristine ocean waters and healthy reef ecosystems are the foundation that supports and surrounds the island.

Nā po'e o Hawai'i care for the land in a manner which recognizes the island and ocean of Kanaloa as a living spiritual entity. Kanaloa is a pu'uhonua and wahi pana where native Hawaiian cultural practices flourish.

The piko of Kanaloa is the crossroads of past and future generations from which the native Hawaiian lifestyle is spread throughout the islands.

ACCESS ACTION



Physical removal of invasive Buffleggrass in Honokanai'a (above): before (top left), during (top middle) and after (top right).

A BATTLE WITH THE BUFFLE

Volunteers helped to restore the sand dune habitat in Honokanai'a by removing highly invasive buffleggrass (*Cenchrus ciliaris*). The plant was intentionally introduced to Kaho'olawe to serve as cattle fodder during the ranching era, and continues to be an extremely aggressive competitor for native plants.

Buffleggrass is an allelopath, which means it can biologically inhibit the growth of other species, so the plant must be cleared from an area before it can be restored with native species. Two techniques are currently used to combat the highly invasive species: physical removal (hand-pulling) and solarization.

The KIRC team is experimenting with salt water inundation as a potential third method of control. Many of the native coastal species have a relative high tolerance for salt water, with some, like the 'aki'aki grass, even seeming to thrive after being flooded by a large high tide or surf event. The buffleggrass though can not tolerate the salt and dies shortly after being flooded with sea water.

Once the buffleggrass is removed, the native 'aki'aki grass is able to re-establish the cleared area through natural biological growth and even encourages the growth of other native coastal plants along with it.

Solarization is an environmentally friendly way to control invasive weeds, that involves covering the ground with plastic sheeting to trap solar energy.

The trapped heat increases the soil temperature and effectively kills the invasive buffleggrass.



Sandbags were filled in Honokanai'a (top) and then transported to the work site by volunteers (middle) to hold down the visqueen plastic sheeting (bottom) that will work to smother out the existing buffleggrass over the following month.

MAUKA TO MAKAI



Volunteers removed invasive koa haole that was surrounding the old wiliwili tree (*left*), clear cutting enough to open up the area and provide a view of the tree from the nearby roadway. Koa haole is a fierce competitor and extremely efficient at taking up ground water. This poses a serious threat to the native wiliwili, which was designated an “Exceptional Tree” of Maui County.

Volunteers also worked with KIRC staff in the ‘ili of Kunaka / Na‘alapa, constructing wattles and gabions (*below*). These type of soil erosion control devices slow water flow and collect sediment, reducing the amount of runoff that actually reaches the ocean.



PROGRAM UPDATES



In September, the KIRC Restoration team collected seed from the native Wiliwili trees (*Erythrina sandwicensis*) that had flowered earlier in the year. Endemic to Hawai'i, the Wiliwili is able to grow in harsh environments where few species can survive, making it a perfect resident for Kaho'olawe.

Traditionally, the lightweight wood of the Wiliwili tree was a preferred choice by Hawaiians for papa he'e nalu (surfboards), 'ama (outrigger canoe floats) and other canoe parts, while the seeds were used to make lei.

Several invasive alien species pose a serious threat to the Native Wiliwili trees, including a non-native seed-boring weevil and the *Erythrina* gall wasp. The Restoration team dedicates a significant amount of time and effort towards protecting the individuals living on Kaho'olawe.



From the top and going clockwise: Flowers of the Wiliwili tree; seeds still anchored in the pods hanging from the tree; KIRC staff member James Bruch opening and emptying a seed pod; pile of hand-collected Wiliwili seeds; seeds found to have been invaded by an alien seed-boring weevil.



After 34 years of service with the State of Hawai'i, the KIRC current Administrative Officer, Ka'ōnohi Lee, will be retiring this coming December. Ms. Lee has been with the KIRC for the last 19 years, starting as the Commission Assistant when the clean-up was still in progress.

A graduate of Kamehameha Schools

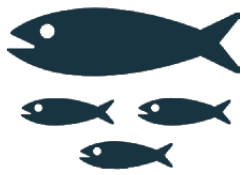
Kāpalama, Ka'ōnohi earned a degree in Sociology & Psychology from the College of Emporia (now Emporia State, Kansas), but chose to work in the Administrative side of public service.

Her experience and knowledge will be missed! We at the KIRC wish her all the best!



Ms. Lee (center) pictured with the Executive Director (far right) and the Commissioners in attendance at the November meeting held on O'ahu. Missing Commissioner Carmen Hulu Lindsey.

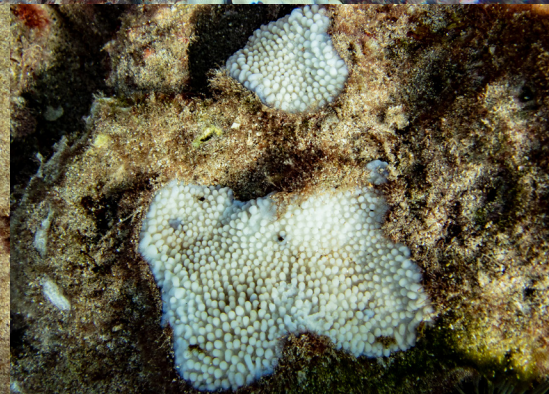
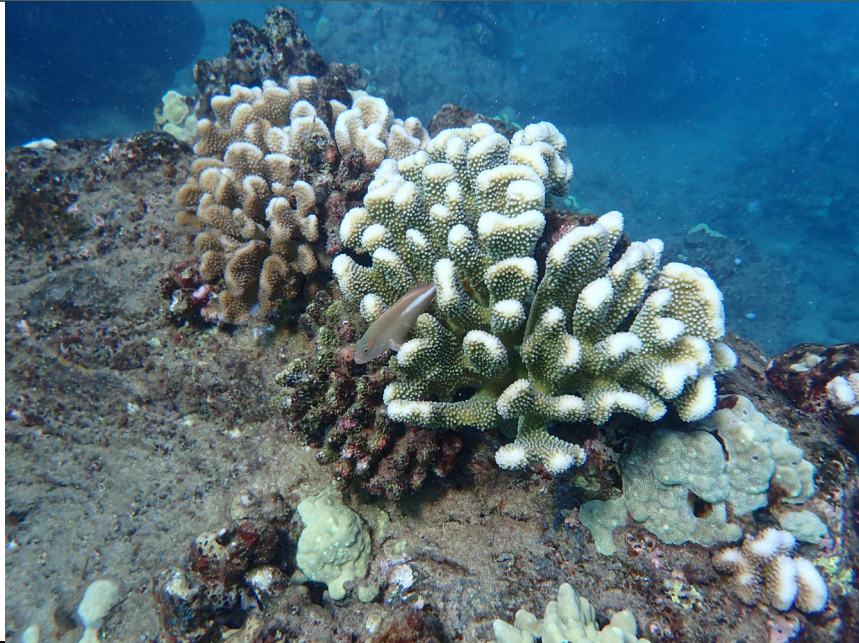
PROGRAM UPDATES



Throughout September and October, the widespread coral bleaching event predicted by the national Oceanic and Atmospheric Administration (NOAA) had a significant impact on reefs across the Hawai'i, including those found in the Kaho'olawe Island Reserve.

KIRC Ocean Program Manager, Dean Tokishi, was not surprised, stating that this is "a global problem, not a local one." He stressed that these types of events "will only become more frequent, unless we as a global society change our priorities and practices."

Though that idea can sometimes seems daunting, Tokishi shared a more optimistic way to view the solution. "If everybody just does a little bit, it will add up to alot."



Three monk seals hauled out at Pu'u Tahiti (above) in the 'ili of Kealaikahiki during the September volunteer access and Spinner dolphins sighted in Honokanai'a during the November volunteer access (below).

The KIRC Ocean Program staff documented evidence of the bleaching seen in the corals located in the Kaho'olawe Island Reserve, including large cauliflower corals (top and above right), small cauliflower coral (above middle) and rice coral above left).

"Bleaching" occurs when corals are stressed by changes in water conditions such as temperature, light, or nutrients, causing them to expel the symbiotic algae living in their tissues, and to turn completely white.



The KIRC planting season was officially opened with the Kaholokalani ceremony, which honors the god Kane and brings ho'okupu (offering of water and Kane kinolau (body forms) to the three rain ahu established on the rim of Moa'ula Nui.

PILINA 'ĀINA

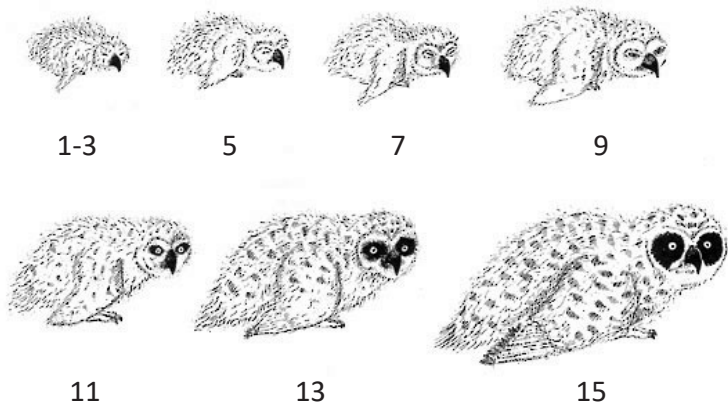
After more than 40 years of struggle, healing and recovery, the island of Kaho'olawe has emerged from an era of destruction and turmoil, entering a time of transition. Action and reaction has given way to long-term planning and coordination.

In 2013, the *Kanaloa 2026 Working Group*, with representation from the Protect Kaho'olawe 'Ohana (PKO), the Kaho'olawe Island Reserve Commission, and the Office of Hawaiian Affairs, was established to lead this transition and spent the next year gathering, organizing and synthesizing information that was ultimately used to develop I OLA KANALOA: A Plan for Kanaloa Kaho'olawe through 2026.

The plan, rooted in a shared vision for Kaho'olawe (see pg 1) and broad goals (center image), outlines a collective effort to protect and nurture Kanaloa Kaho'olawe in all forms. This month's newsletter highlights examples of **Pilina 'Āina** (renewing connections).

In May, volunteers on access with the PKO came across a Pueo nestling in a ground nest (*top right*) in the 'ili of Hakioawa. This is the first recorded sighting of a nest on Kaho'olawe in recent history, representing a significant renewed connection of . Consultants from the Pueo Working Group estimated the chick to be around 11 days old (*below*). The fact that hatchlings disperse from the nest in just over two weeks made this sighting even more amazing.

Pueo nestling growth of chicks from hatching to dispersal, by Leslie A. Leroux, with age in days.



The return of Pueo to Kaho'olawe is largely a result of the unyielding dedication and intense efforts to restore and conserve the natural environment of Kanaloa. These beautiful animals can now be seen perched in trees and soaring in the skies across the island (*right*). With substantially fewer predators and virtually no human infrastructure, the island provides a safe haven for the endangered birds.

I Ola Kanaloa goals and programs. Illustration by Jonathan Ching.

Create sustainable shelters, facilities, and habitation sites

Preserve the history of Kanaloa Kaho'olawe

Establish programs for learning, observation, and data collection

Restore and conserve the natural environment



Pilina 'Āina
renewing connections

Pae Pae Ola
living sustainably



Maintain cultural sites, customs, and traditions

Expand awareness, access, and experience of the 'Āina

Provide a sanctuary for dialogue, healing, and wellbeing

Establish Kanaloa's role through the transition to the Lāhui

Kūkulu Ea
realizing identity

ke Kūhohonu
elevating knowledge

This past October, the Protect Kaho'olawe 'Ohana, with the support of the KIRC Executive Director and Staff, opened the KIRC planting season with the traditional calling of the rain in a Kaholokalani ceremony held on Kaho'olawe and across the channel at Pu'u Mahoe on Maui. Modern-day Hawaiian cultural practitioners at Pu'u Mahoe called on the clouds of Haleakalā to form and billow in the clear morning sky; while from Kaho'olawe, their counterparts called the Nāulu rain clouds from Kahikinui and Pu'u Mahoe to journey across the 'Alalākeiki Channel to embrace Kaho'olawe and rejuvenate its parched soil.



LONOIKAMAKAHIKI

The start of the Hawaiian year coincides with the rising of the constellation Makali'i (Pleiades) at sunset, which typically occurs between late-October and mid-November. The rising of Makali'i also signals the beginning of the **Makahiki** season, a time of peace, renewal and celebration.

Traditionally, the roughly four-month period of Makahiki was a time to honor the god Lono, one of the four major gods recognized not only here in Hawai'i, but throughout the Pacific. Lono's domain includes fertility, agriculture, peace and renewal. During Makahiki, war between the ali'i (chiefs) was forbidden, and the qualities of Lono were celebrated by feasting, hula and storytelling, as well as competition in sport and games.

In early November, on the first volunteer access following the rise of Makali'i, the Protect Kaho'olawe 'Ohana celebrated the opening of the Makahiki season, conducting several traditional activities on Kaho'olawe including a ceremonial procession and presentation of ho'okupu (offering). In February, the 'Ohana will observe the closing of the Makahiki season with similar ceremonial protocol.



One of the three rain ko'a (shrine) found at Pu'u 'O Moa'ula Nui and the Nāulu rains that connect Maui Nui and Kaho'olawe (top), Kaholokalani access participants in traditional malo and kīkepa (center), and the lele (alter) dedicated to Lono at Moa'ula Iki (bottom).

ALOHA KAHO‘OLAWE

The Kaho‘olawe Island Reserve Commission is dedicated to the rehabilitation and revitalization of Kaho‘olawe and its surrounding waters. With each small success in environmental, marine and cultural restoration, the KIRC advances Hawaiian heritage for generations to come. A donation to any of the following programs will help to continue these efforts and make a difference.



RESTORATION PROGRAM

Restores native, land-based habitats and watersheds through innovative strategies addressing erosion control, botanical and faunal restoration, and enhancement of the island’s natural water systems.



RESERVE OPERATIONS PROGRAM

Provides transport, maintenance, manpower and overall safety within the Reserve, while also managing logistics and vessel maintenance for the KIRC.



OCEAN PROGRAM

Manages marine resources within the Reserve, fostering ancestral knowledge while integrating both ancient and modern resource management techniques.



ADMIN AND OUTREACH PROGRAM

Supports all KIRC programs while also managing volunteers; GIS mapping; community outreach; library, archive and collections; fund development; finance and human resources.



CULTURAL PROGRAM

Provides for the care and protection of Kaho‘olawe’s cultural resources and the expansion of meaningful cultural use of the island.

**BECOME A MEMBER TODAY OR
GIVE THE GIFT OF MEMBERSHIP
THIS HOLIDAY SEASON!**

Lae Paki at the ‘ili boundary of Kealaikahiki and Honoko‘a lush with verdant akulikuli (below). Wiliwili sapling recently planted in the CIP work area in the ‘ili of Kinaka/Na‘alapa.(opposite page).



ALOHA KAHO'OLAWE

Aloha Kaho'olawe is a campaign to support Kaho'olawe restoration and access. Through this initiative, we invite participation via membership donations, partnerships and legislative support. By building consensus that there is value in the historical, cultural, ecological and community building resources shared through Kaho'olawe, we aim to share this special place now and for generations to come.

Individual donations are critical to our efforts to protect, restore and preserve the ocean and land of this important cultural reserve.

If you have been impacted by Kaho'olawe — as a volunteer, friend, teacher, student, researcher or other community or family member, we invite you to join today.

GIVING LEVELS & BENEFITS:

Benefits Include	Patron	Benefactor	Sustainer
Kaho'olawe Card Set	✓		
VIP access to Maui Ocean Center	✓	✓	
KIRC Logo Tee or Hat (<i>while supplies last</i>)	✓	✓	
KIRC Logo Sticker (<i>while supplies last</i>)	✓	✓	✓
Subscription to Ko Hema Lamalama	✓	✓	✓
e-News Enrollment	✓	✓	✓
Mahalo	✓	✓	✓

MAHALO TO ALL OF OUR CURRENT MEMBERS!

BENEFACTORS (\$100 to \$499)

Andaz Hyatt
Lee Alameida
Johanna Amorin
Jeffrey Chang
Robert and Karen Cole
Jenny Costello
Ian Coster
James and Karen DeWinter
Carey Driscoll
Stephen Hack
Bill and Elaine Hartleb
Charles Ice
Calvin Ichinose
Aheone Kanamu
Vania Kanamu
Bob Law
Edward Lyman
Scott Marshall
Marty Martins
Luke McLean
Maui Ocean Center

PATRONS (\$500 and up)

Margaret Enomoto
Ann Fahl
Patricia Justice
Ellen Pelissero
Darryl Van Kempen
Rebecca Zalke



Send this completed form with your donation to:
811 Kolu Street, Suite 201 | Wailuku, HI 96793.

Checks may be made payable to Kaho'olawe Rehabilitation Trust Fund. You can also give online at kahoolawe.hawaii.gov/donations.shtml.

CONTACT INFORMATION:

Name and/ or company

Address

E-mail

Phone

GIFT TYPE:

- PATRON (\$500 & up)
 BENEFACTOR (\$100-\$499)
 SUSTAINER (\$50-\$99 | \$25 with student ID)
 OTHER _____

For Benefactors and Patrons, please choose one of the gifts from below, and indicate your **preferred** size and color (1st come, 1st served):

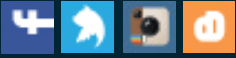
- Hat (*one size fits most*)
 Camo Orange Camo Green Teal
 Blue Green
 Shirt
 M L XL
 Blue Orange

Comments:

The Kaho'olawe Island Reserve Commission (KIRC) is a 170(c)1 government nonprofit, authorized per IRS Publication 557, to receive tax-deductible contributions to programs that serve a public purpose. Donors should always consult with their tax advisors before claiming any tax-deductible charitable contributions.



Kaho'olawe Island Reserve Commission
 811 Kolu Street, Suite #201, Wailuku, HI 96793
 Tel: (808) 243-5020 | Fax: (808) 243-5885
 Email: administrator@kirc.hawaii.gov
 Web: kahoowlawe.hawaii.gov



facebook.com/KircMaui
twitter.com/KircMaui
instagram.com/KahoowlaweIslandReserve
kircblog.blogspot.com

Download our FREE mobile app: **KAHOOLAWE ISLAND GUIDE**

Ko Hema Lamalama is designed and edited by Maggie Pulver, KIRC Public Information Specialist.

This publication has been funded by a NOAA Bay Watershed Education and Training grant. *Printed on recycled paper.*



ABOUT THE KIRC

The Kaho'olawe Island Reserve Commission (KIRC) was established by the Hawai'i State Legislature in 1994 to manage the Kaho'olawe Island Reserve while held in trust for a future Native Hawaiian sovereign entity. The KIRC has pledged to provide for the meaningful and safe use of Kaho'olawe for the purpose of the traditional and cultural practices of the native Hawaiian people and to undertake the restoration of the island and its waters. Its mission is to implement the vision for Kaho'olawe Island in which the *kino* (body) of Kaho'olawe is restored and *nā po'e o Hawai'i* (the people of Hawai'i) care for the land. The organization is managed by a seven-member Commission and a committed staff specializing in five core programs: Ocean, Restoration, Culture, Operations and Administration.

COMMISSIONERS

- Protect Kaho'olawe 'Ohana*: Joshua Kaakua, Chairperson (UH, College of Engineering)
 County of Maui: Saumalu Mataafa (Research and Policy Analyst, County of Maui)
 Department of Land & Natural Resources: Suzanne Case (Chairperson, Department of Land & Natural Resources)
 Protect Kaho'olawe 'Ohana: Jonathan Ching (Land and Property Manager, Office of Hawaiian Affairs)
 Native Hawaiian Organization: Hōkūlani Holt (Director, Ka Hikina O Ka La & Coordinator, Hawai'i Papa O Ke Ao, UHMC)
 Office of Hawaiian Affairs (OHA): Carmen Hulu Lindsey (Trustee, OHA)
 Michael K. Nāho'opi'i, Executive Director

