

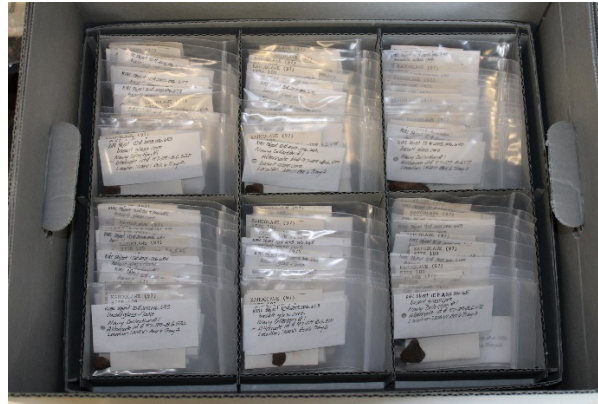


Kaho'olawe Island Reserve Commission

COMMISSION PROJECTS UPDATE

With the advent of COVID-19 and the resulting health and safety measures, staff has been working at home as well as in the office. The staff has started rehousing artifacts and samples in the Navy Collection. This entails:

- Completion of data entry form for the PastPerfect database
- Digitally photographing item from various angles along with artifact slips (if applicable)
- Printing artifact/sample information on Tyvek label tags to include with the item
- Placing item and tags in an appropriate polypropylene bag
- Placing the bag in an archival safe



Rehoused Navy Collection